











TRAZABILIDAD TRACEABILITY

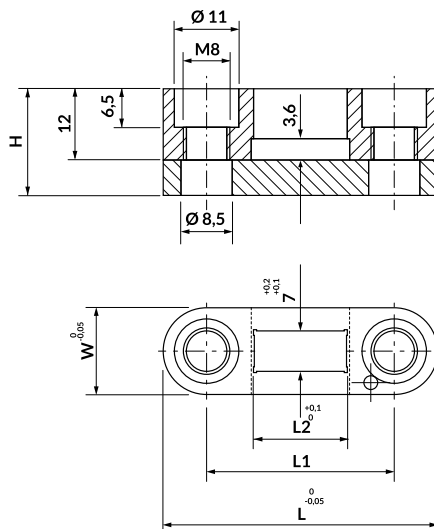


ÍNDICE
INDEX

15		PORTAMARCADOR PRMP STAMP RETAINER PRMP
15		MARCADOR PMP STAMP PMP
16		MARCADOR PMM STAMP PMM
16		MARCADOR PMR STAMP PMR
17		PORTAMARCADOR PRMV STAMP RETAINER PRMV
18		MARCADOR PMV STAMP PMV
19		PORTAMARCADOR PRMW STAMP RETAINER PRMW
110		MARCADOR PMW STAMP PMW
111		MARCADOR UM STAMP UM
112		MARCADOR PMS STAMP PMS

PORTAMARCADOR PRMP STAMP RETAINER PRMP

STOCK



i Para montar con los marcadores **PMP**, **PMM** o **PMR**.
Assembly with **PMP**, **PMM** or **PMR** stamp.

W	H	L	L1	L2	Nº de sellos (PMP o PMM)	Nº de sellos (PMR)
15	18	45	30	12	3	6
15	18	47	32	16	4	8
15	18	55	40	24	6	12
15	18	63	48	32	8	16
15	18	71	56	40	10	20

How to order: PRMP + L

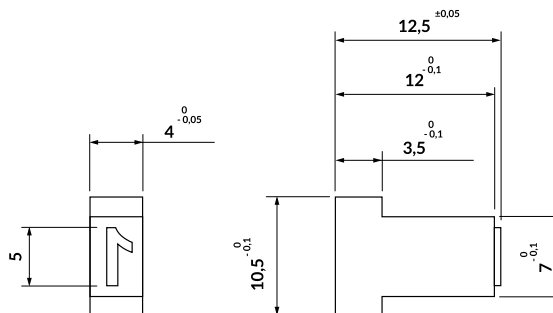
MARCADOR PMP STAMP PMP

Grabado mecanizado / Machined engraving

Material: 1.2842

Dureza / Hardness: 58-60 HRC

STOCK



i Para montar con el portamarcador **PRMP**.
Assembly with **PRMP** stamp retainer.

Available characters	
NÚMEROS	0-9
LETRAS	A-Z
BARRA	/
ESPACIO	
GUIÓN MEDIO	-
GUIÓN BAJO	-

How to order: PMP + Character

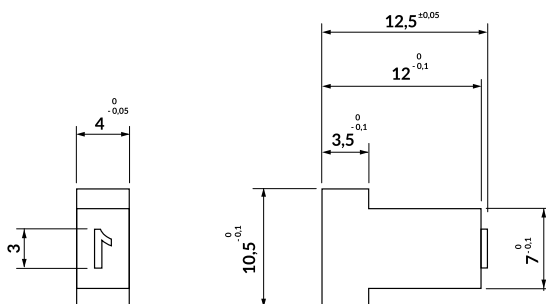
MARCADOR PMM STAMP PMM

Grabado mecanizado / Machined engraving

Material: 1.2842

Dureza / Hardness: 58-60 HRC

STOCK



i Para montar con el portamarcador PRMP.
Assembly with PRMP stamp retainer.

Caracteres disponibles / Available characters	
NÚMEROS	0-9
LETRAS	A-Z
BARRA	/
ESPACIO	
GUIÓN MEDIO	-

How to order: PMM + Character

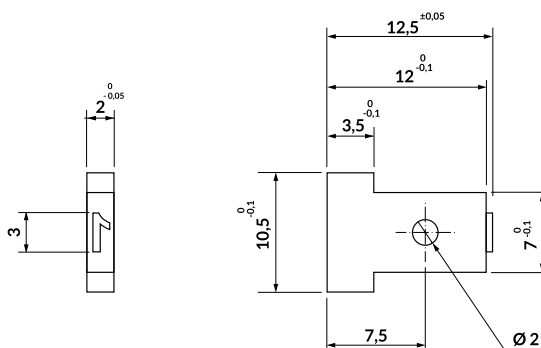
MARCADOR PMR STAMP PMR

Grabado mecanizado / Machined engraving

Material: 1.2842

Dureza / Hardness: 58-60 HRC

STOCK



i Para montar con el portamarcador PRMP.
Assembly with PRMP stamp retainer.

Available characters	
NÚMEROS	0-9
LETRAS	A-Z
BARRA	/
ESPACIO	
GUIÓN MEDIO	-
GUIÓN BAJO	-

How to order: PMR + Character

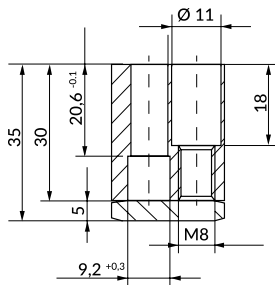
PORTAMARCADOR PMV STAMP RETAINER PMV

STOCK

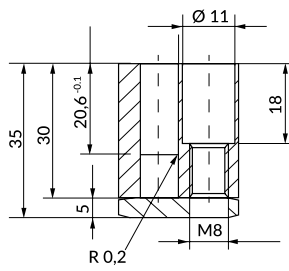


i Para montar con el marcador PMV.
Assembly with PMV stamp.

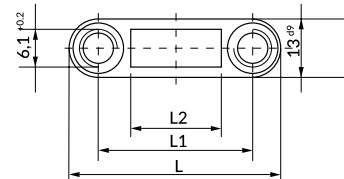
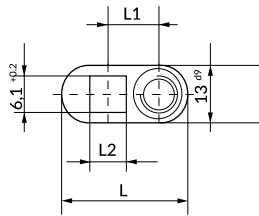
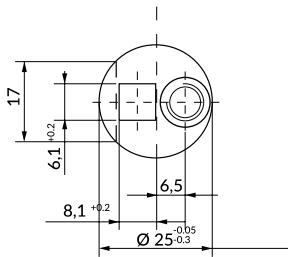
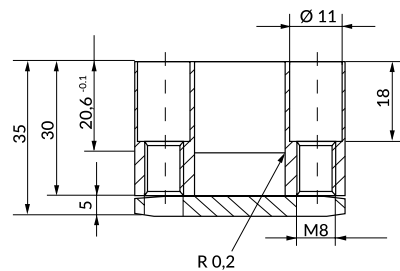
Type A



Type B



Type C



L ^{d9}	L1 ^{±0.1}	L2 ^{+0.2}	Nº of markers	Type
-	-	-	2	A
24	9	4,1	1	
28	11	8,1	2	
32	13	12,1	3	B
43	30	16,1	4	
47	34	20,1	5	
51	38	24,1	6	C
67	54	40,1	10	
71	58	44,1	11	

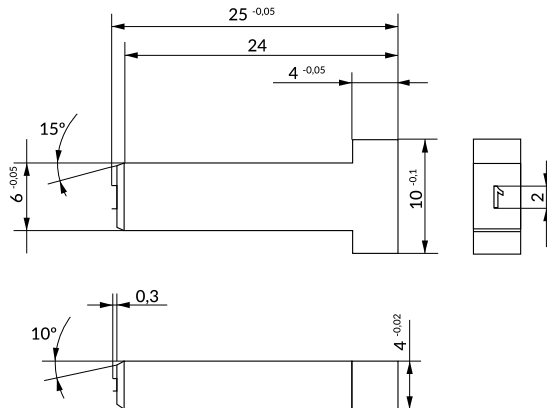
How to order: PRMV + Type + L

MARCADOR PMV STAMP PMV

Material: 1.2080

Dureza / Hardness: 62+2 HRC

STOCK



i Para montar con el portamarcador PRMV.
Assembly with PRMV stamp retainer.

Available characters	
Numbers	Letters
0-9	A-Z

How to order: PMV + Character

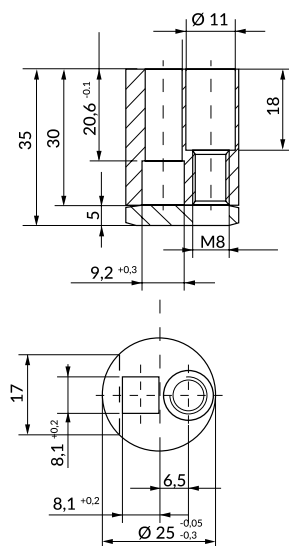
PORTAMARCADOR PRMW STAMP RETAINER PRMW

STOCK

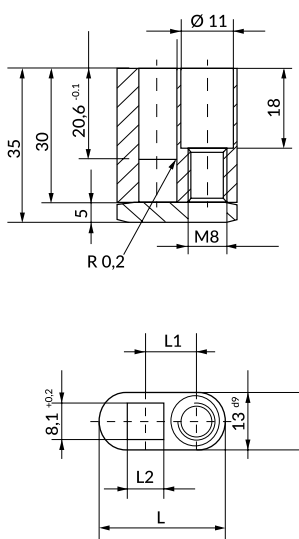


i Para montar con el marcador PMV.
Assembly with PMV stamp.

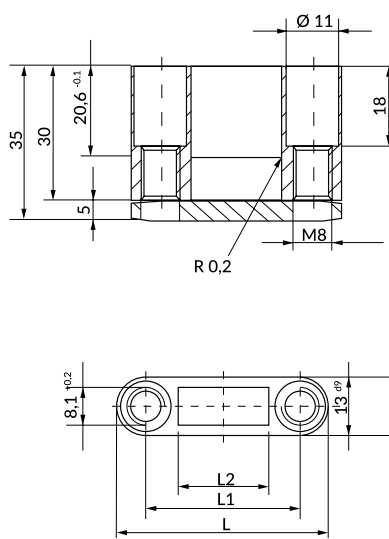
Type A



Type B



Type C



L ^{Ø9}	L1 ^{±0.1}	L2 ^{+0.2}	Nº of markers	Type
-	-	-	2	A
24	9	4,1	1	B
28	11	8,1	2	
32	13	12,1	3	
43	30	16,1	4	
47	34	20,1	5	C
51	38	24,1	6	
67	54	40,1	10	
71	58	44,1	11	

How to order: PRMW + Type + L

MARCADOR PMW STAMP PMW

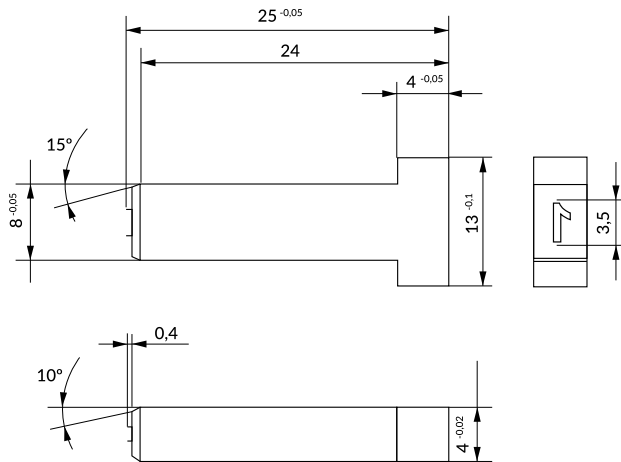
Material: 1.2080

Dureza / Hardness: 62+2 HRC

STOCK



i Para montar con el marcador PMW.
Assembly with PMW stamp.

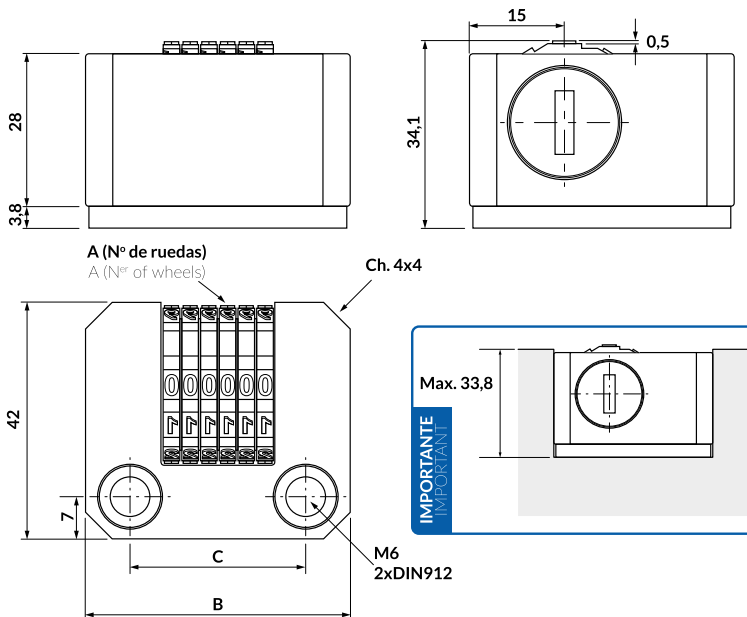


Available characters	
Numbers	Letters
0-9	A-Z

How to order: PMW + Character

MARCADOR UM STAMP UM

STOCK



Reference nº	A	B	C	Characters position
UM.043642	4	36	22	Regarding drawing
UM.064242	6	42	28	Regarding drawing
UM.0436RV	4	36	22	Inverse to drawing
UM.0642RV	6	42	28	Inverse to drawing

Forma de pedido: Referência
How to order: Reference nº

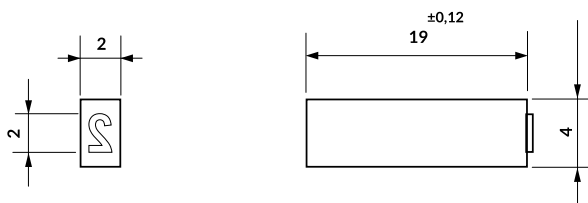
MARCADOR PMS STAMP PMS

Grabado mecanizado / Machined engraving

Material: 1.2842

Dureza / Hardness: 58-60 HRC

STOCK



Available characters	
NÚMEROS	0-9
LETRAS	A-Z
BARRA	/
ESPACIO	
GUIÓN MEDIO	-

How to order: PMS + Character